


---

---

---

---

---

---

---

---




---

---

---

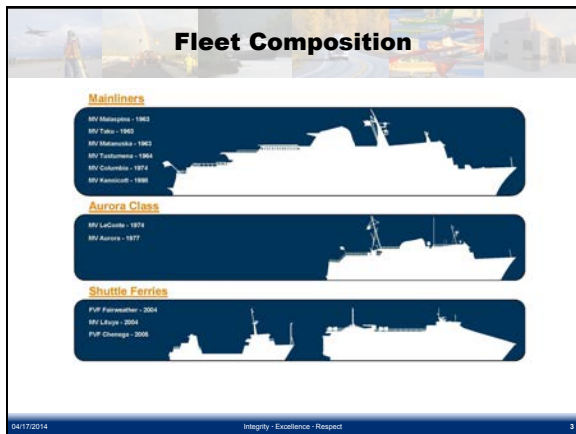
---

---

---

---

---




---

---

---

---

---

---

---

---




---

---

---

---

---

---

---

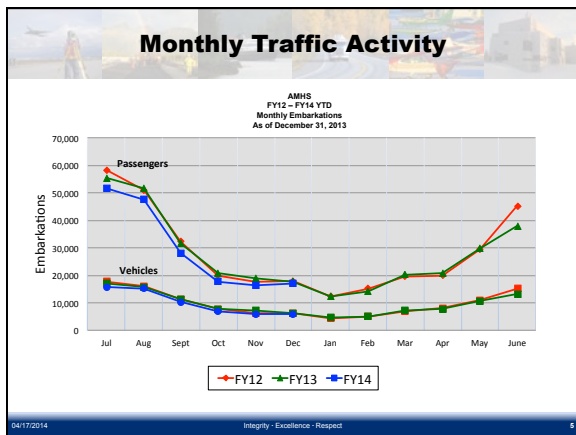
---

---

---

---

---




---

---

---

---

---

---

---

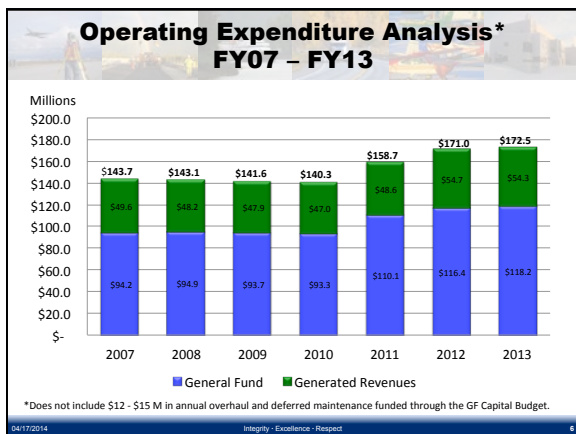
---

---

---

---

---




---

---

---

---

---

---

---

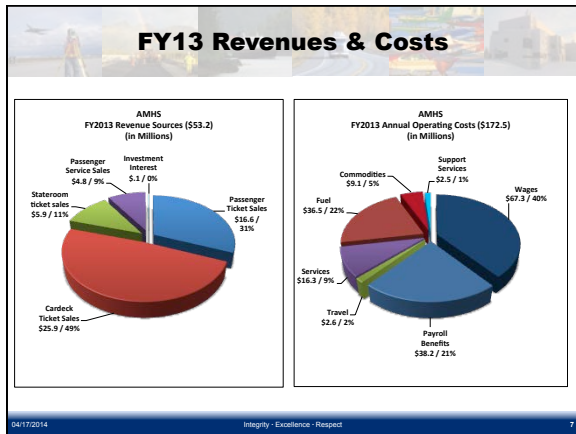
---

---

---

---

---




---

---

---

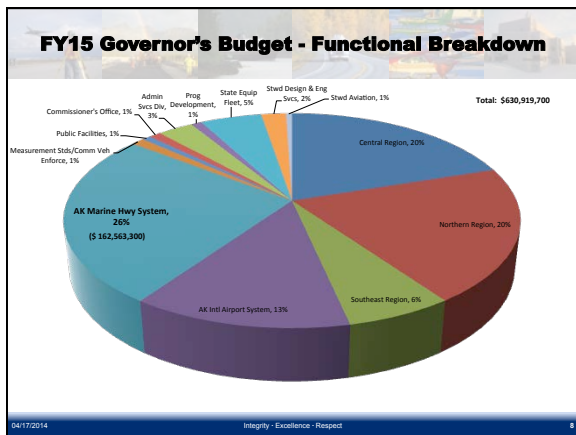
---

---

---

---

---




---

---

---

---

---

---

---

---

**ALASKA MARINE HIGHWAY FUND**

Annual Financial Report 2013

**2013 ANNUAL TRAFFIC VOLUME REPORT**

ALASKA MARINE HIGHWAY SYSTEM

<http://dot.alaska.gov/amhs/reports.shtml>

04/17/2014 Integrity - Excellence - Respect 9

---

---

---


---

---

---

---

---



### Tustumena Replacement Specifications

Specifications	Existing	Replacement
• Length Overall	296'-0"	325'-0"
• Beam (Main Deck)	59'-0"	68'-0"
• Depth	21'-9"	23'-0"
• Passenger Capacity	174	250
• Stateroom Total	25	47
• Vehicle Capacity (Lane Feet)	720'	1,135'
• Van Quantity	12 (20')	12 (40')
• Cruise Speed	13.8 knots	15 knots

04/17/2014 Integrity - Excellence - Respect 10

---

---

---

---

---

---

---

---



### Tustumena Replacement Additional Design Features

- No Bar; Cafeteria with horseshoe shaped galley
- Forward observation lounge above cabin deck
- Forward Starboard door for floating ramp terminals
- Offset casing with mezzanine deck to utilize non-van deck height
- Liquefied Natural Gas (LNG) Analysis continuing. Need to work with United States Coast Guard (USCG) regarding fuel tank issues

04/17/2014 Integrity - Excellence - Respect 11

---

---

---

---

---

---

---

---



### Tustumena Replacement Project Milestones

Tustumena Replacement Project 70062	AMHS Ketchikan Alaska
Awarded Consultant Professional Services Agreement (PSA) The Glosten and Associates Team, Seattle WA	November 2013
AMHS Terminal Sight Visits (Project Team and Southeast Region Terminal Design Section)	December 2013
Reconnaissance Report	February 2014
Public Participation (Homer, Kodiak, Dutch Harbor, etc.)	April-May 2014
Environmental Document	June 2014
Design Study Report	September 2014
Final Design Completion	June 2015

04/17/2014 Integrity - Excellence - Respect 12

---

---

---

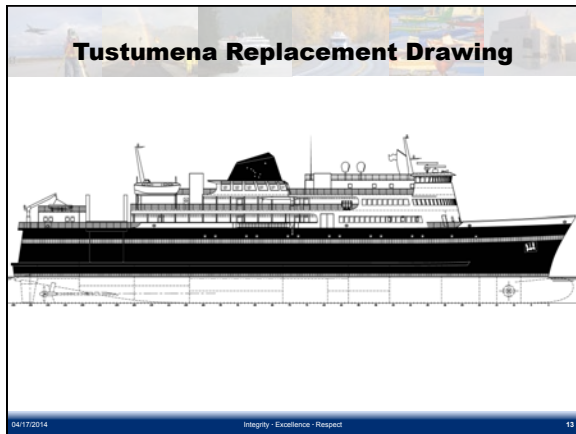
---

---

---

---

---



---

---

---

---

---

---

---

---

**New Day Boat ACF's**

- Vessel Mission Requirements
  - Payload – 53 vehicles and 300 passengers
  - Speed – 15.5 knot schedule speed
    - 16 knots @ 85% Maximum Power
  - Single ended, with drive through loading/unloading (Bow and Stern Doors)
  - Rapid load/unload of passengers/vehicles
  - Highly maneuverable

04/17/2014 Integrity - Excellence - Respect 14

---

---

---

---

---

---

---

---

**New Day Boat ACF's – Design Study**

- Major Design Decisions
  - Bow Loading, Side Opening Doors
  - Concept Design is 280 ft length overall
  - Shelter important equipment from ice accumulation
  - Optimize bow shape – reduce spray

04/17/2014 Integrity - Excellence - Respect 15

---

---

---


---

---

---

---

---



### New Day Boat ACF's – Design Development

Principal Design Element	Day Boat ACF	M/V Leconte
Length Overall	280'	235'
Beam Over Guards	67'	57'
Draft	12' – 6"	13' – 11"
Passenger Capacity	300 (326 seats)	247 (230 seats)
Vehicle Capacity	53 ASV	34 ASV
Propulsion Horsepower	6,000	4,300
Speed	16.0 Kts	14.5 Kts

Note: Tustumena overall length is 296'

04/17/2014 Integrity - Excellence - Respect 16

---

---

---

---

---

---

---

---



### New Day Boat ACF's



04/17/2014 Integrity - Excellence - Respect 17

---

---

---

---

---

---

---

---



### New Day Boat ACF's



04/17/2014 Integrity - Excellence - Respect 18

---

---

---

---

---

---

---

---



## New Day Boat ACF's

Day Boat ACF Schedule	Dates
Contract Design Plans	February 2014
Specifications for Contract	April 2014
Negotiate Guaranteed Maximum Price or Advertise	May 2014
Award Shipyard Contract	June-July 2014
Delivery of 1 <sup>st</sup> Vessel Target Date	Mid 2016
Delivery of 2 <sup>nd</sup> Vessel Target Date	May 2017

04/17/2014 Integrity - Excellence - Respect 19

---

---

---


---

---

---

---

---



## Functions of MTAB

- Issue recommendations to AMHS based on public testimony
  - Letters to MTAB Board Members
  - Public Meetings 4-5 times each year
- Review Strategic Plan(s) that includes the mission, core values, objectives, initiatives and performance goals of the Marine Highway System.
- Advocate on behalf of AMHS to Governor and Legislators for operating funds, capital projects, vessel replacements and additional vessels.

04/17/2014 Integrity - Excellence - Respect 20

---

---

---


---

---

---

---

---



## MTAB Board Members

<ul style="list-style-type: none"> <li>• Robert Venables – <i>Chair</i> Northern Southeast Alaska</li> <li>• Joshua Howes – <i>Vice Chair</i> At-Large</li> <li>• Gerry Hope Central Southeast Alaska</li> <li>• Maxine Thompson Southeast Alaska</li> <li>• Tim Joyce Prince William Sound</li> <li>• Patricia Branson Southwest Alaska, Kodiak Island</li> </ul>	<ul style="list-style-type: none"> <li>• Shirley Marquardt Southwest Alaska, Aleutian Chain</li> <li>• Richard Knapp Retired Marine Captain</li> <li>• Ron Bressette Representative of a Union</li> <li>• Dan Kelly Business Owner</li> <li>• Cathie Roemmich At-Large</li> <li>• Vacant Travel Agent</li> </ul>
--	--

04/17/2014 Integrity - Excellence - Respect 21

---

---

---

---

---

---

---

---



**Contact MTAB**

[www.dot.state.ak.us/mtab](http://www.dot.state.ak.us/mtab)

MTAB Background Information  
Board Member contact info  
Agenda/Minutes

04/17/2014 Integrity Excellence Respect 22

---

---

---

---

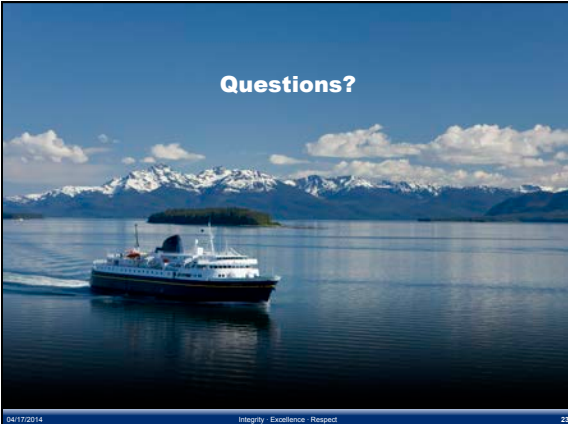
---

---

---

---

**Questions?**



04/17/2014 Integrity Excellence Respect 23

---

---

---

---

---

---

---

---