

### Transportation on Indian Reservations and Alaska Native Villages

---

---

---

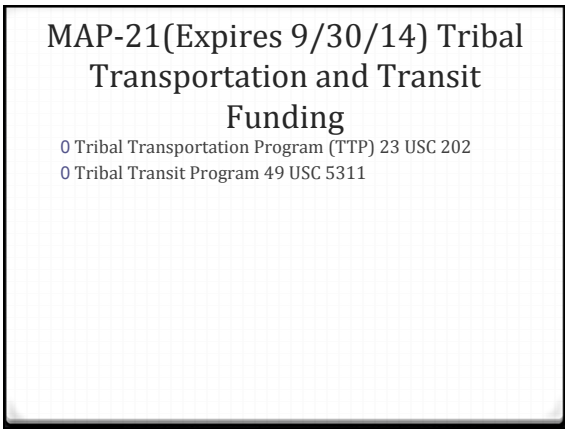
---

---

---

---

---



### MAP-21(Expires 9/30/14) Tribal Transportation and Transit Funding

- 0 Tribal Transportation Program (TTP) 23 USC 202
- 0 Tribal Transit Program 49 USC 5311

---

---

---

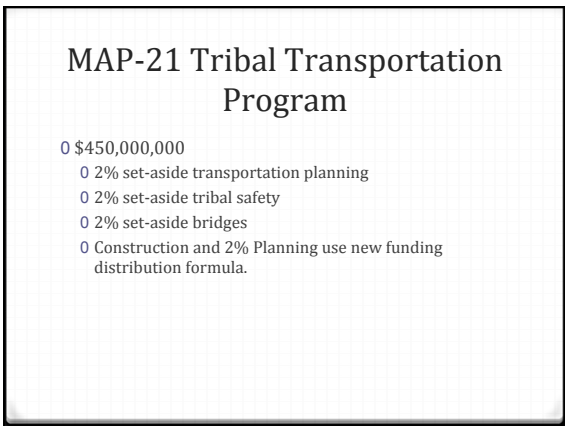
---

---

---

---

---



### MAP-21 Tribal Transportation Program

- 0 \$450,000,000
- 0 2% set-aside transportation planning
- 0 2% set-aside tribal safety
- 0 2% set-aside bridges
- 0 Construction and 2% Planning use new funding distribution formula.

---

---

---

---

---

---

---

---

## Tribal High Priority Projects

- 0 \$30 million per year
- 0 UNFUNDED in 2013 and 2014

---

---

---

---

---

---

---

---

## Tribal Transit Program - Nationwide

- 0 \$5,000,000 Discretionary Program: on a competitive basis
- 0 \$25,000,000 Formula Distribution for existing transit systems: shall be apportioned as formula grants, as provided in subsection (j)

Issues we face: Rural Alaska Transit Challenges

- 0 Communities where a traditional transit bus won't work.
- 0 Limited access to rural villages, many off road system.

---

---

---

---

---

---

---

---

## Main forms of transportation in most of remote Alaska



---

---

---

---

---

---

---

---



---

---

---

---

---

---

---

---



---

---

---

---

---

---

---

---



---

---

---

---

---

---

---

---



---

---

---

---

---

---

---

---



---

---

---

---

---

---

---

---



---

---

---

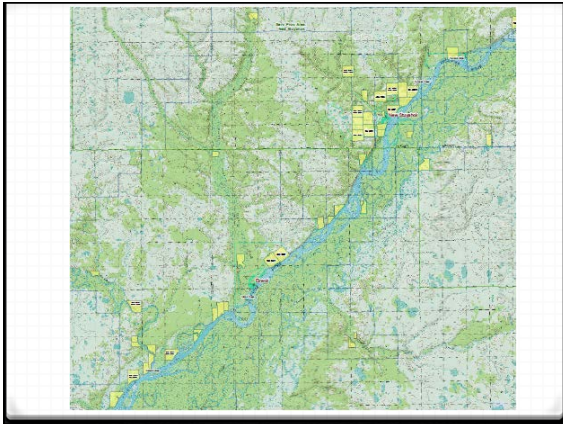
---

---

---

---

---



---

---

---

---

---

---

---

### Needs and Issues

- 0 Better access between villages
- 0 Landfills improvements and access to
- 0 Loss of population
- 0 School closings due to low student numbers
- 0 Access to subsistence
- 0 Other???

---

---

---

---

---

---

---

### Important Upcoming Activities

- 0 Reauthorization of MAP-21
- 0 National efforts to bring about tribal unity on issues
  - 0 Tribal Transportation Unity Act
  - 0 Ongoing discussions on best process for correcting distribution formula issues

---

---

---

---

---

---

---

Questions/Comments  
and Thank you!

---

---

---

---

---

---

---